

## | INTRODUCTION

TIBICO PRESTRESSING & DECORATION WORKS LLC is a specialized Post Tension Company established in Dubai, having a performing staff with knowledge and experience necessary to provide professional service to the Consultants, General Contractor's full PT design, Supply and full supervision of installation for PT Post Tensioning System.

TIBICO has variable range of services to completely satisfy local post tensioning market requirements and the main international standards. Having designs and supply of high quality strands, Anchorages of any dimension to suit buildings construction has installed either live, dead or coupling anchorages for any type of bonded internal and external post tensioning systems.

### **Our design and services include:**

- Value Engineering for structures
- Conceptual design for preliminary costing
- Design and execution of Post Tensioned slabs in buildings.

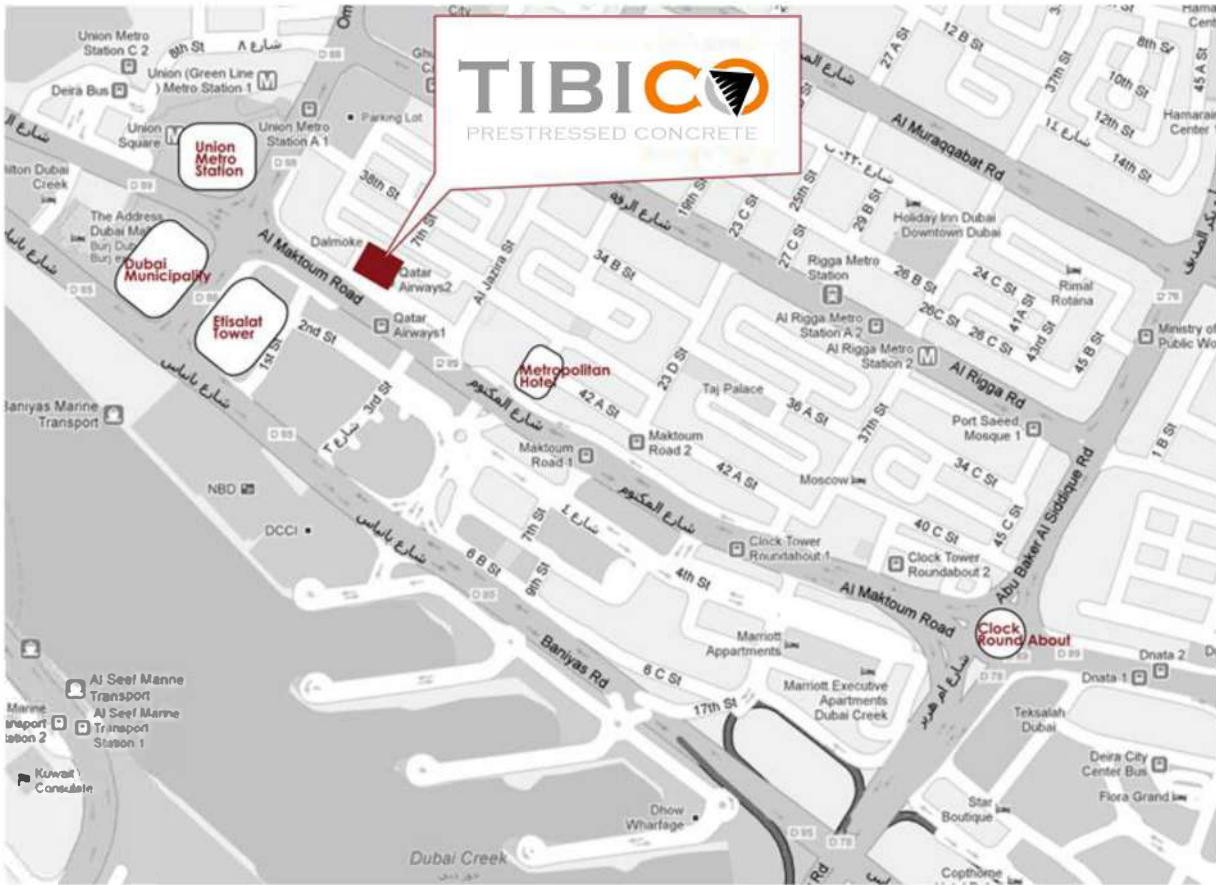
## | Post Tensioning in Building

In buildings, PT is used primarily for the following reasons

- Larger spans (large clear area without Columns)
- Thinner slabs
- Better crack control
- Reduce concrete quantity
- Reduce steel quantity
- Reduce form work requirement and turnaround time.
- Aesthetic and functional adaptability.
- Reduce overall structural costs.

TIBICO has vastly experienced personnel engaged in design and execution of post tensioned slabs. Our team of engineers works closely with the clients, consultants and contractors to derive the most economical value engineering solutions through incorporation of the latest innovations in material science and techniques alike.

## LOCATION



## CONTACT DETAILS

off.#401,Afra building | Al Rigga Street

PO.Box. 14946 Dubai | UAE

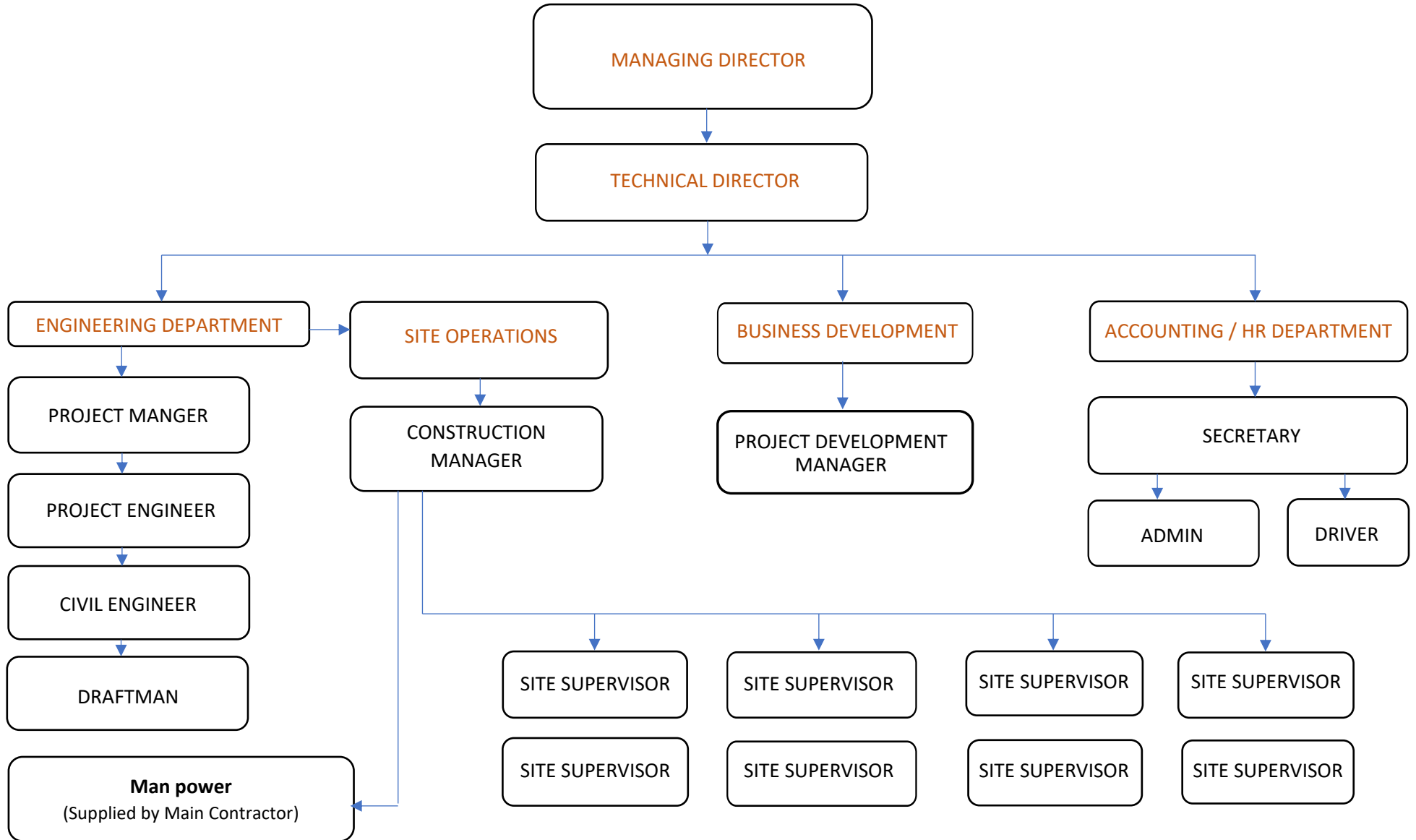
**Tel:** +971 4 2272415

**Fax:** +971 4 2272417

**Mobile:** +971 50 7753313

**Email:** tibicodxb@gmail.com

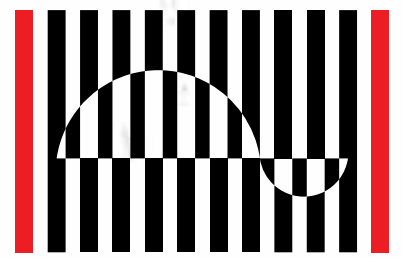
## TIBICO Organizational Chart





# MOMENT®

## MPT PRESTRESSING & POST TENSIONING SYSTEM



**HALFEN MOMENT**

*YOU BUILD, WE CONNECT!*

# HALFEN-MOMENT GROUP

THE HALFEN-MOMENT GROUP OF COMPANIES STARTED ITS OPERATION IN MALAYSIA, SUPPLYING MECHANICAL COUPLERS TO CONSTRUCTION SITES, AS A COST EFFECTIVE ALTERNATIVE FOR CONVENTIONAL SPLICING. ONE OF OUR FIRST ICONIC PROJECTS WAS THE PETRONAS TOWERS. SINCE THEN, THE GROUP HAS BEEN EXPANDING RAPIDLY AND TODAY THE MOMENT® COUPLER IS A WELL-ESTABLISHED BRAND IN THE MARKET.

With headquarters in Malaysia, serving as the central hub, and being supported by its subsidiaries in Singapore, Philippines and India together with invaluable partners in other markets, we have positioned ourselves as a leading building products player with an established and extensive network throughout Asia and the Middle East.

Long term partnerships with our customers motivate us to continuously extend our product offering to more reinforcement and construction accessories. Our product range is used from small scale residential projects to large development projects in infrastructure, high rise or commercial construction. Our specialized teams are there to provide technical information and to ensure consistent and high quality solutions.

Since 2012, the Halfen-Moment Group has been part of CRH plc, a Global Fortune 500 company, with an annual turnover in excess of €27 billion. Thanks to CRH plc, The Halfen-Moment Group has access to financial resources, innovative products and technical expertise from around the world in order to support its continuous development.

Being part of a stock quoted company, we are aware of our global, local and social responsibility. Leading our business with integrity is our daily credo!

## MILESTONES

# 1991

Incorporation of MOMENT



1998

Expansion of **MOMENT** to Singapore

1999

Expansion of **MOMENT** to Philippines

2003

**MOMENT** goes Middle East

2005

First patent of **MOMENT** BARBREAK coupler

2008

Sole distributorship for FORTA reinforcement fibre in Asia

2010

Expansion of **MOMENT** to India



## QUALITY

Providing quality assurance & safe products through excellent service, is one of the top principles of Halfen-Moment Group. Being part of CRH plc., we strive to adhere to the most stringent group quality policies. Our in house team is conceived daily with quality checks to ensure the highest quality is offered. Our quality management system is accorded by the ISO 9001 : 2008 accreditation.

## OUTSTANDING SUPPORT

Halfen-Moment Group offers additional services to you from technical support, statistical calculation to product installation performed by our qualified engineers & specially trained staff.

Acquisition of **MOMENT** by CRH and restructuring as **HALFEN-MOMENT Group**

**2012**

Widening of product portfolio via collaboration with CRH subsidiary companies: **HALFEN, ANCON AND PLAKA GROUP**

**2013**

**Launching** of the complete range of precast accessories

**2014**

Participating in the iconic **Qatar Basin project** with 2.5 million epoxy couplers supplied within the year

**2015**

**Partnership** with **Mekano4** to supply **European Certified** Post Tensioning System, Pot Bearing and Stayed Cable

**2017**

**2016**

**Developmental** of operational excellence with **Lean 6S Safety** implementation

# CONTENTS

■	<b>MPT PRESTRESSING AND POST TENSIONING SYSTEM</b>	<b>4</b>
	(a) MPT Flat Slab Systems	
	(b) MPT Dead End Anchorage	
	(c) MPT Multistrand Round Systems	
	(d) MPT T13 Anchorage	
	(e) MPT T15 Anchorage	
	(f) Strands	
	(g) Post Tensioning Jacks	
	(h) Grouting	
■	<b>NOTES</b>	<b>10</b>

# MPT PRESTRESSING AND POST TENSIONING SYSTEM

is designed and tested to meet stringent standards, the range of buildings and civil engineering applications includes:

- Commercial and residential high rise
- Retails shopping centers
- Load transfer structures
- Slabs on grade
- Silos and reservoirs
- Bridges
- Ground anchoring and earth retaining

## MPT FLAT SLAB SYSTEMS

MPT flat slab system is normally adopted for bonded tendon. The strands are individually gripped in one triangle flat anchor head unit and transmit their pre-stressing forces by means of flat type anchor plate casting unit. The strands are stressed individually by means of a mono strand jack. The strands are contained in one flat duct (duct size: 20mm x 70mm) which is made of corrugated galvanized metal. To ensure corrosion protection and to give adequate bond strength, the tendons are filled with suitable cement grout mix after complete stressing of the strands. Facilitating of concrete placing due to the absence of tendons in the webs, and ease for placing tendons.



MPT Flat Slab System and flat duct being laid in position.



PC strand being marked after stressing.



## MPT DEAD END ANCHORAGE

Stressing of a tendon from one end only, to which the load is applied.



MPT dead end anchorage being laid in position.

## MPT MULTISTRAND ROUND SYSTEMS

A method of reinforcing and pre-stressing concrete, masonry and other structural elements. Today, it is used for a wide range of applications including office buildings, condominiums, hotels, parking structures, slab-on-ground foundations, ground anchors, storage tanks, stadiums, silos, and bridges.

The systems are normally adopted for bonded tendons. The tendons consist of a bundle of strands with a nominal diameter of 0.5" (12.7 mm.) or 0.6" (15.2 mm.). The number of strands per tendon can be from 4 strands up to 42 strands of diameter 0.5" or 31 strands of diameter 0.6". The strands in the tendons are contained in one round duct which is made of corrugated galvanized metal.

The strands are individually gripped in one anchor head unit and transmit their pre-stressing force by means of anchor plate casting unit. For each anchor size, special spiral reinforcement is provided at the anchor plate casting to give adequate splitting reinforcement for bursting stresses developed at the anchorage zone. The strands in tendon are stressed simultaneously by means of a multi strand stressing jack from capacity 1,100 KN up to 5,000 KN. The strands can also be stressed individually by means of mono jack.

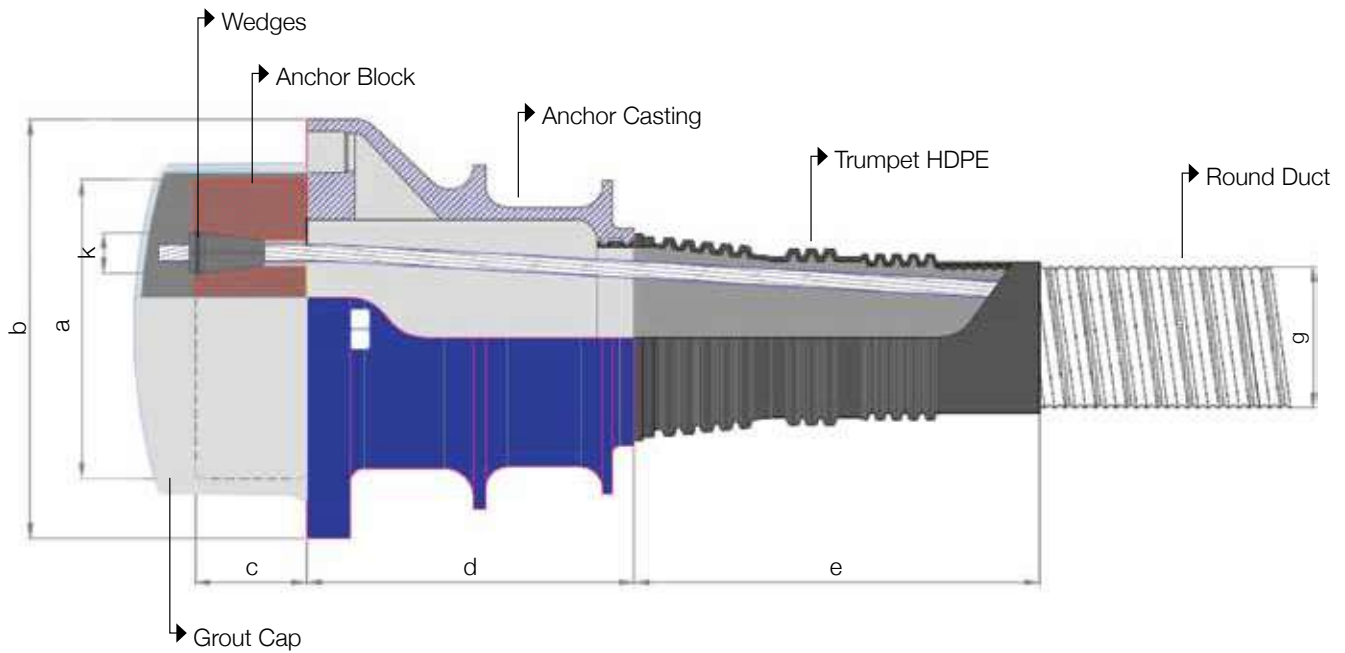


MPT Multistrand Round System on post tensioning beam.



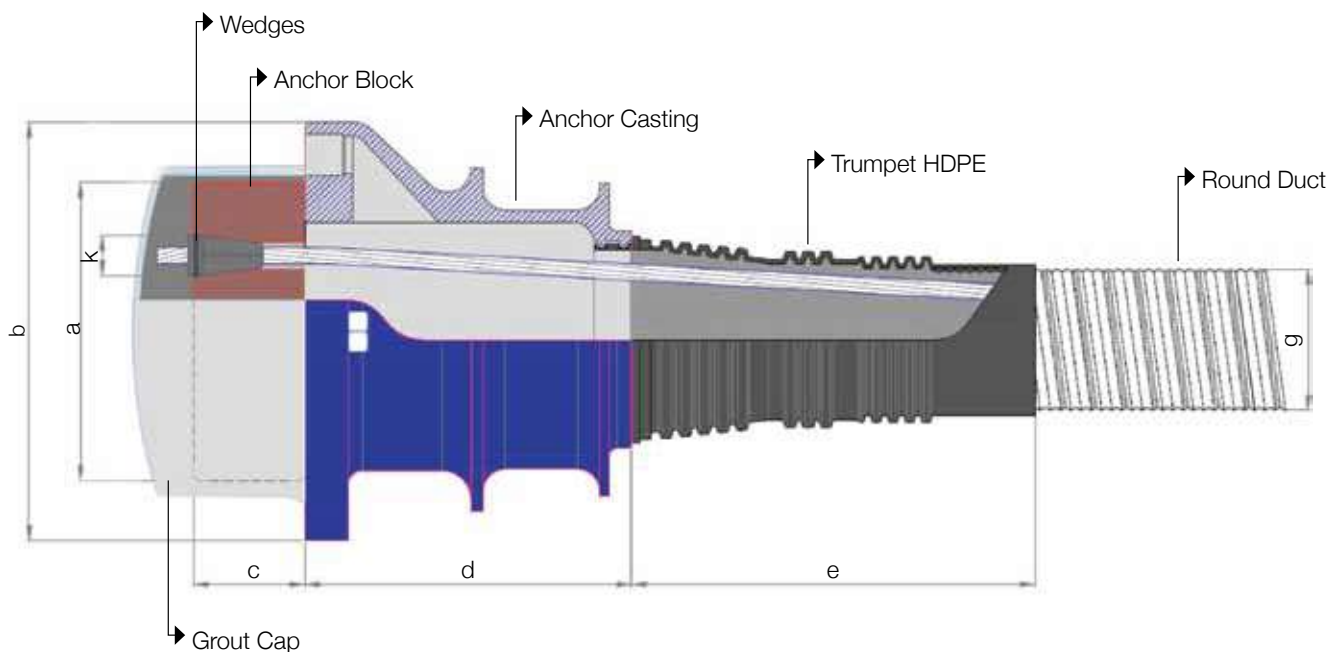
Post tensioning beams with anchor block and strand in place ready for stressing.

## MPT T13 ANCHORAGE



Anchorage			Dimension in mm							
			4T13	7T13	12T13	15T13	19T13	22T13	27T13	31T13
Anchor Block	a	Diameter	80	100	140	155	170	190	210	220
	c	Length	40	40	50	55	60	65	70	80
Anchor Casting	b	Diameter	125	155	190	210	230	265	340	360
	d	Length	120	150	160	190	190	200	230	280
Trumpet HDPE	e	Length	100	100	140	190	200	280	280	290
Round Duct	g	Internal Diameter (ID)	40	45	60	65	75	80	90	95
Wedges	k	Diameter	23	23	23	23	23	23	23	23

## MPT T15 ANCHORAGE



Anchorage			Dimension in mm							
			4T15	7T15	12T15	15T15	19T15	22T15	27T15	31T15
Anchor Block	a	Diameter	100	125	170	190	200	230	250	260
	c	Length	45	45	55	60	65	70	85	90
Anchor Casting	b	Diameter	140	180	220	250	270	300	330	336
	d	Length	130	160	190	220	220	240	275	310
Trumpet HDPE	e	Length	65	65	180	210	225	275	275	275
Round Duct	g	Internal Diameter (ID)	45	55	75	80	90	100	110	115
Wedges	k	Diameter	28	28	28	28	28	28	28	28



## STRANDS

The strands are formed with seven steel wires: one central wire around which the other six are wrapped. They are generally supplied already stabilized (low relaxation) and certified according to the regulations by an independent laboratory, in coils weighing kg 2500-3000. Usually greased or waxed strands, incased in a HDPE sheath, commonly called unbounded, are used to manufacture the external tendons. Such Strands can be hot-dip galvanized too.



Appearance	Nominal Dia. (mm)	Tensile Strength (Mpa)	Relaxation (Mpa)	Standards
Seven wires left or right lay	8.0, 9.3, 9.53, 11.1, 12.5, 12.7, 15.2, 15.24, 15.7	1770, 1860	Low relaxation ≤2.5%	ASTM A416 BS5896 EN10138-3 AS/NZS4672 GB/T5224 KS7002 ISO6934-4 SS213620 JISG3536 UNE36094 NEN3868

Other standard and non-standard products are available upon request

## POST TENSIONING JACKS

The jack is placed over the strand and when tensioning starts they are automatically and simultaneously engaged in the pulling head of the jack. Once the required elongation and load are reached the lock-off device of the jack can be activated to house the wedges in the anchor head uniformly. The tensioning can be accomplished in more steps based on the elongation of the cable. A tensioned cable can be released using proper releasing devices.



Multi Stressing Jack being hoisted to position.



Multi Strand Stressing in progress. This process shall be done with caution.

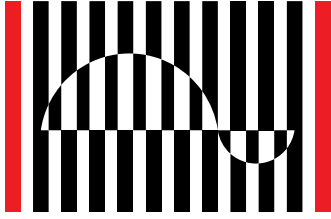
## GROUTING

Cables are normally grouted after sealing their anchorages with concrete or, if required, using proper grouting caps. Before grouting the tendons, they should be flushed to ensure that no obstruction would impede the flow of the injected grout.

The sandless grout, injected using MPT grouting pump, is kept under pressure throughout curing. The water-to-cement ratio is kept as low as possible. Usual proportion of ingredients are: 36-38 liters of water, 100kg of cement and additive according to the instructions of the manufacturer. The mix produces 72-74 liters of grout.



The usage of Grout Mixer and Pump is to make sure smooth flowing of grout, filling the captivity of the duct.



**HALFEN MOMENT**

*YOU BUILD, WE CONNECT!*

[www.halfen-moment.com](http://www.halfen-moment.com)



## MALAYSIA

### HALFEN MOMENT SDN. BHD.

28 Jalan Anggerik Mokara 31/59, Kota Kemuning,  
40460 Shah Alam, Selangor, Malaysia

T : +603 5122 4182 F : +603 5122 4184

E : [info@halfen-moment.com](mailto:info@halfen-moment.com)

## INDIA

### HALFEN MOMENT INDIA PVT. LTD.

6, Girikunj, Devdarshan Society, Dongripada,  
GB Road, Thane 400607, India

T : +9122 2500 7092 F : +9122 2500 7093

E : [hmin@halfen-moment.com](mailto:hmin@halfen-moment.com)

## SINGAPORE

### HALFEN-MOMENT PTE. LTD.

9 Tractor Road, Singapore 627970

T : +65 6266 6802 F : +65 6266 6980

E : [hmsg@halfen-moment.com](mailto:hmsg@halfen-moment.com)

## PHILIPPINES

### HALFEN-MOMENT INC.

2933 Regus, Joy Nostalg, ADB Avenue,  
Ortigas Center, Pasig City, Philippines

T: +632 957 6381

E: [christian.vergara@halfen-moment.com](mailto:christian.vergara@halfen-moment.com)



**CRH** *Leading with Integrity*

**DISCLAIMER:** The construction applications and details provided in this literature are indicative only. In every case, project working details should be entrusted to appropriately qualified and experienced persons.

Whilst every care has been exercised in the preparation of this document to ensure that any advice, recommendations or information is accurate, no liability or responsibility of any kind is accepted in respect of Halfen-Moment Group.

With a policy of continuous product development Halfen-Moment Group reserves the right to modify product design and specification without due notice.



## رخصة تجارية Commercial License

### تفاصيل الرخصة / License Details

License No.	728581	رقم الرخصة
Company Name	TIBICO PRESTRESSING & DECORATION WORK L.L.C	اسم الشركة
Trade Name	TIBICO PRESTRESSING & DECORATION WORK L.L.C	الإسم التجاري
Legal Type	Limited Liability Company - Single Owner(LLC - SO)	الشكل القانوني
Expiry Date	04/03/2023 تاريخ الإنتهاء	تاريخ الإصدار
D&B D-U-N-S ®	0 الرقم العالمي	رقم الرخصة الام
Register No.	1790145 رقم السجل التجاري	عضوية الغرفة
		Main License No. 728581
		DCCI No. 248234

### الاطراف / License Members

Share / الحصة	Role / الصفة	Nationality / الجنسية	Name / الإسم	No./رقم الشخص
100.00%	Shares Owner / مالك حصص	Jordan / الاردن	حنان جمال حسنى الخواجا	546031
	Manager / مدير	Jordan / الاردن	حنان جمال حسنى الخواجا	546031

### نشاط الرخصة التجارية / License Activities

Interior Decoration	اعمال تنفيذ التصميم الداخلي
Prestressed Concrete Contracting	اعمال تنفيذ وتركيب الوحدات الانشائية مسبقة الشد

### العنوان / Address

Phone No	تليفون	P.O. Box	صندوق بريد
Fax No	فاكس	Parcel ID	رقم القطعة
Mobile No	هاتف متحرك	mohannad.tibi@gmail.com	البريد الإلكتروني / Email
		مكتب 402-401 ملك عفراء غانم علي خليفة الفلاسي-ديرة_ المرقبات	

### الملاحظات / Remarks

إصدار تراخيص المشاريع مرتبط بالاشتراطات الواردة في شهادة سجل المزاولة الفنية الصادرة من البلدية - الاطلاع على السجل من خلال الرابط: deqsmart.dm.gov.ae  
تم تغيير الشكل القانوني و انسحاب شريك بتاريخ 31/08/2022

Print Date 31/08/2022 11:12 تاريخ الطباعة

Receipt No. 14554462 رقم الإيصال



يمكنك الآن تجديد رخصتك التجارية من خلال الرسائل النصية القصيرة، أرسل رقم الرخصة إلى 6969 (دو/اتصالات) للحصول على اذن الدفع.  
Now you can renew your trade license by sending a text message (SMS). Send your trade license number to 6969 (Du/ Etisalat) to receive payment voucher.

Get FREE access to Zoho One for the first year  
احصل على زوهو ون مجاناً للسنة الأولى



وثيقة إلكترونية معتمدة وصادرة بدون توقيع من دائرة الإقتصاد والسياحة في دبي. لمراجعة صحة البيانات الواردة في الرخصة يرجى مسح رمز الاستجابة السريعة  
this is a certified e-document issued without signature by the department of Economy and Tourism. Kindly Scan the QR Code to Verify the certificate

رقم الإعتما د : 378589 - 2 - 1 : تاريخ الإصدار : 24-Feb-2022 : تاريخ الطباعة : 24-Feb-2022

اسم مقدم الطلب :

اسم الشركة /المكتب/ تيبكو للوحدات المسبقة الشد وأعمال الديكور ش.ذ.م.م  
المصنع

اسم الشركة الأم : HALFEN MOMENT SDN BHD : مقرها : ماليزيا

نوع الإعتما د : إعتما د نظام بناء جديد : نوع النظام : أنظمة انشائية

اسم النظام : MPT Mono Strand PT System Anchor Casting S3 : فرعي : خرسانة مسلحة لاحقة الشد

وصف النظام : اعتما د نظام خرسانة لاحقة الشد

شروط خاصة :

التزام الشركة المحلية باستخدام مواد نظام الشركة الأجنبية المتعاقد معها وفي حال مخالفة ذلك يعتبر الاعتما د لاجي.

استخدام أسلاك شد من مصانع معتمدة من مختبر دبي المركزي.

التقدم بتجديد اعتما د النظام لدى بلدية دبي قبل شهر من انتهائه.

ان من مسؤولية المهندس الاستشاري في اي مشروع يتم استخدام فيه هذا النظام التأكد من مطابقة النظام لشروط هذا الاعتما د ومتطلبات كودات التصميم والاشتراطات الانشائية المعتمدة في الامارة ومواصفات المشروع من حيث التصميم والمواد والتنفيذ.

شروط عامّة :

1. هذه الشهادة لا تجيز تنفيذ أية أعمال إلا بعد الحصول على ترخيص بناء لكل مشروع يستخدم هذا النظام عن طريق مكتب استشاري مرخص في دبي

2. استخدام مواد معتمدة من مختبر دبي المركزي.

3. تطبيق المواصفات الموضحة بالكتالوج والمقدمة لبلدية دبي.

4. في حال القيام بأي تعديل على النظام يجب الحصول على موافقة بذلك والا يعتبر النظام لاجي بحكم القانون.

5. يعتبر النظام لاجي في حالة ظهور مشاكل فنية تخالف المعايير والمواصفات المعتمدة

6. هذا الاعتما د ساري المفعول لمدة سنة واحدة من تاريخ صدوره، خاضع للتجديد.



هاتف طوارئ البلدية: (2232323) (8004999).

رؤية إدارة المباني : مبانينا حلم العالم





شهادة تسجيل لضريبة القيمة المضافة في الامارات العربية المتحدة  
Certificate of Registration for Value Added Tax in the United Arab Emirates

The Federal Tax Authority certifies that the entity below is  
a registered person for Value Added Tax in the UAE

تشهد الهيئة الاتحادية للضرائب أن الجهة التالية مسجلة لضريبة القيمة  
المضافة في الامارات العربية المتحدة

Full Arabic legal name	<u>تسكو للوحدات المسبقة الشد و أعمال الديكور ش.ذ.م.م</u>	الاسم القانوني الكامل باللغة العربية
Full English legal name	<u>TIBICO PRESTRESSING &amp; DECORATION WORK LLC</u>	الاسم القانوني الكامل باللغة الانجليزية
Registered address	<u>AFRA BUILDING OFFICE 401, RIQQA, DEIRA, Dubai, Dubai, United Arab Emirates, 14946, +971507753313</u>	العنوان المسجل
Tax Registration Number	<u>100333976700003</u>	رقم التسجيل الضريبي
Effective Registration Date	<u>01/01/2018</u>	تاريخ التسجيل الفعلي
First VAT Return Period	<u>01 Jan 2018 - 30 Apr 2018 and quarterly thereafter</u>	فترة أول إقرار لضريبة القيمة المضافة
VAT Return due date	<u>28 May 2018</u>	تاريخ استحقاق إقرار ضريبة القيمة المضافة
Start and end dates of Tax periods:	1 Feb to 30 Apr, 1 May to 31 July, 1 Aug to 31 Oct, 1 Nov to 31 Jan	بداية ونهاية الفترات الضريبية

يرجى التأكد من صحة تفاصيل الشهادة. يجب إبلاغ الهيئة الاتحادية للضرائب في حال تغيير الاسس التي حصلت فيها على رقم التسجيل الضريبي الخاص بك.

Please check that the details on this certificate are correct. You must inform the Federal Tax Authority of any change on the basis of which you obtained your Tax Registration Number.



Issuing Date:

19/03/2018

تاريخ الإصدار

## POLICY SCHEDULE

<b>TYPE:</b>	<b>PROFESSIONAL INDEMNITY INSURANCE (ANNUAL)</b>
<b>POLICY NO.:</b>	<b>20/1407/22/95</b>
<b>INSURED:</b>	Tibico Prestressing and Decoration Works
<b>PERIOD:</b>	18-03-2022 To: 17-03-2023 Both Days inclusive Local Standard Time at the insured location.
<b>LIMIT OF LIABILITY:</b>	AED 10,000,000/- any one claim and in the Aggregate including costs & expenses.
<b>EXCESS:</b>	AED 50,000/- Each & Every Claim including of cost and expenses
<b>WORDINGS:</b>	ProceSSIONal Indemnity wording Munich Re A&E
<b>RETRO ACTIVE DATE:</b>	18/03/2019 - Subject to uninterrupted cover from the retro date for the same limit and subject to no known or reported loss or circumstances as from 18/03/2022 to 23/03/2022.
<b>SCOPE OF COVER:</b>	Structural Engineering -Design and Supervision
<b>TRIGGER:</b>	Claims Made
<b>CONDITIONS:</b>	<ul style="list-style-type: none"><li>• 30 days notice of cancellation.</li><li>• Claims Control Clause.</li><li>• Cost inclusive Clause.</li><li>• Retroactive Date Clause .</li><li>• Change in Risk Clause</li><li>• No ERP/Maintenance Period cover</li><li>• Cover is for work emanating out of UAE office only</li></ul> <p>Extensions– sub-limited to 10% of limit of indemnity any one claim and in the aggregate including costs and expenses, the below extensions are part of the overall aggregate limit of the policy</p> <ul style="list-style-type: none"><li>• Loss of Documents</li><li>• Libel or Slander</li><li>• Dishonesty of Employees</li></ul>
<b>EXCLUSIONS/WARRANTY:</b>	<ul style="list-style-type: none"><li>• USA / Canada Exclusion Clause</li><li>• Asbestos and Toxic Mould Exclusion</li><li>• NMA2919 War and Terrorism Exclusion Clause</li><li>• Directors and Officer Liability Exclusion</li><li>• Cyber Risks Excluded</li><li>• Pure Financial losses / Consequential Losses Excluded</li></ul>

### **UNITED FIDELITY INSURANCE COMPANY**

In Conformity with the Federal Law No. 6/2007 Reg. No (8) dated 22/12/1984. Authorized paid-up Capital Dh. 100,000,000

Ras Al Khaimah T: +971 7 2351584, F: +971 7 2353213, P.O. Box: 1010 - Sharjah T: +971 6 5682277, F: +971 6 5681586, P.O. Box: 5333  
Dubai T: +971 4 2502501, F: +971 4 2502504, P.O. Box: 1888 - Abu Dhabi T: +971 2 6263313, F: +971 2 6263526, P.O. Box: 721  
Fujairah T: +971 9 2222302, F: +971 9 2220294, P.O. Box: 4417  
info@fidelityunited.ae

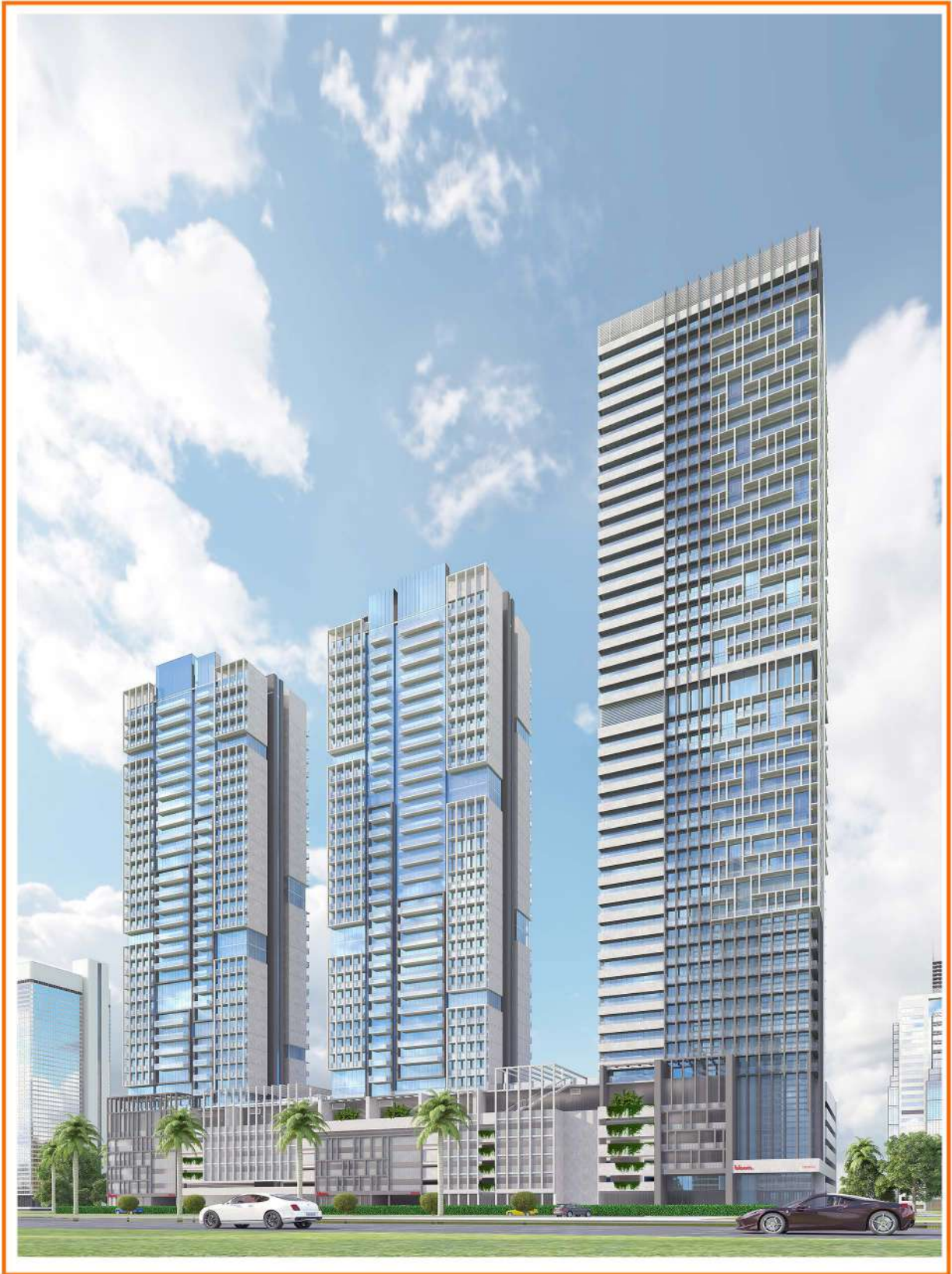


**CONSULTANTS : AL KHAWAJAH ENGINEERING CONSULTANTS**  
**CONTRACTOR : BECON CONSTRUCTION.**

**TIBICO**   
PRESTRESSED CONCRETE

**01**

**RESIDENTIAL AND COMMERCIAL BUILDING**  
**G+4P+(29&24 FLS) @ AL BARSHA SOUTH FOURTH**  
**POST TENSION VALUE: 2,773,824 DHS**  
**PLOT NO : JVC 15SHRA200**



CONSULTANTS : AL KHAWAJAH ENGINEERING CONSULTANCY  
CONTRACTOR : AL OROBA CONTRACTING CO.

**TIBICO**   
PRESTRESSED CONCRETE

02

RESIDENTIAL BUILDING  
G+4P+(39&29&29) @ AL BARSHA SOUTH  
POST TENSION VALUE : 3,580,846 DHS  
PLOT NO : JVC10RHRA200



PROPOSED BUILDINGS (B+G+S)  
FOR  
DHABI KHALFAN DHABI TAMIM  
UMM SAQUEEK - DUBAI

CONSULTANTS :ENG. ADNAN SAFFIRINI  
CONTRACTOR : BECON CONSTRUCTION.

**TIBICO**  
PRESTRESSED CONCRETE

03

RESIDENTIAL BUILDING  
16 NOS B+G+S TYP BUILDINGS @ AL SAFA FIRTST  
POST TENSION VALUE: 1,857,167 DHS  
PLOT NO : 3530190



**CONSULTANTS : NATIONAL ENGINEERING BUEARU  
 CONTRACTOR : AL HAMMAD CONTRACTING.**

ARCHITECTS. ENGINEERS - PLANNERS

**TIBICO**   
 PRESTRESSED CONCRETE

**04**

**SCHOOL  
 G+3 @ ALBARSHA SOUTH  
 POST TENSION VALUE : 709,853 DHS  
 PLOT NO: 6734107**



**CONSULTANTS : ARTICA ARCHITECTS**

**CONTRACTOR : TORONTEC ENGINEERING CONSULTANTS.**

ARCHITECTS. ENGINEERS • PLANNERS

**TIBICO**   
PRESTRESSED CONCRETE

**05**

**RESIDENTIAL BUILDING  
2B+5G+15+R @ IMPZ (MEAISEM FIRST)  
POST TENSION VALUE : 477,147 DHS  
PLOT NO : MO15**



**CONSULTANTS : NATIONAL ENGINEERING BUREAU  
CONTRACTOR : NEW SYSTEM ENGINEERING.**

ARCHITECTS. ENGINEERS + PLANNERS

**TIBICO**   
PRESTRESSED CONCRETE

**06**

**RESIDENTIAL AND COMMERCIAL BUILDING  
UG+G+3TYP+R @ ALBADA. DUBAI  
POST TENSION VALUE : 73,440 DHS  
PLOT NO : 3330206**





CONSULTANTS : 4U CONSULTANTS.

CONTRACTOR : AL BADR CONTRACTING

**4U** Engineering  
Consultants  
ARCHITECTS. ENGINEERS. PLANNERS

**TIBICO**  
PRESTRESSED CONCRETE

07

COMMERCIAL BUILDING G+S  
GOUND+MEZZANINE@ WARSAN FOURTH. DUBAI  
POST TENSION VALUE : 370,000 DHS  
PLOT NO: 6150381



**CONSULTANTS : ENG.ADANAN SAFFARINI**  
**CONTRACTOR: NEW SYSTEM ENGINNERING.**



**TIBICO**   
PRESTRESSED CONCRETE

**08**

**RESIDENTIAL AND COMMERCIAL BUILDING**  
**G+5 @ WARSAN FOURTH. DUBAI**  
**POST TENSION VALUE : 178,602 DHS**  
**PLOT NO : IC3-R-20**



CONSULTANTS : 4U ENGINEERING CONSULTANTS  
CONTRACTOR : F3 CONTRACTOR .

**4U** Engineering  
Consultants  
ARCHITECTS. ENGINEERS + PLANNERS

**TIBICO**  
PRESTRESSED CONCRETE

09

RESIDENTIAL AND COMMERCIAL BUILDING  
2B+G+2 @ AL QUOZ, DUBAI  
POST TENSION VALUE : 260,000 DHS  
PLOT NO : 3542259



**CONSULTANTS : AL KHAWAJAH ENGINEERING CONSUTLANTS.  
CONTRACTOR : BECON CONSTRUCTION.**

**TIBICO**   
PRESTRESSED CONCRETE

**10**

**RESIDENTIAL BUILDING  
1B+G+4FL+ ROOF @ JUMERIAH VILLAGE COMMUNITY  
POST TENSION VALUE : 511,485 DHS  
PLOT NO : JVC14WMP002**



**CONSULTANTS : ATRIUM ARCHITECTS.**  
**CONTRACTOR : NEW SYSTEM ENGINEERING.**

**TIBICO**   
 PRESTRESSED CONCRETE

**11**

**RESIDENTIAL BUILDING**  
**B+G+7 @ INTERNATIONAL CITY , WARSAN FOURTH**  
**POST TENSION VALUE : 265,720 DHS**  
**PLOT NO : IC3-F-42**



**CONSULTANTS : AL KHAWAJAH ENGINEERING CONSULTANTS**

**CONTRACTOR : AL QABDAH CONTRACTING**

**TIBICO**   
PRESTRESSED CONCRETE

**12**

**RESIDENTIAL BUILDING  
B+G+4PARK.+23 FLS @ JUMEIRAH VILLAGE CIRCLE  
POST TENSION VALUE : 700,000  
PLOT NO : 1954**